

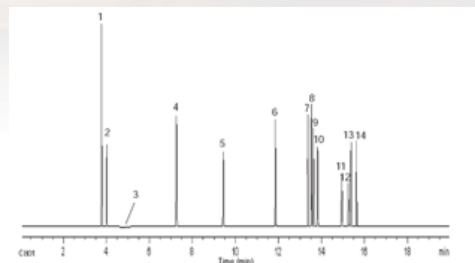
OV-PLOT Q PLOT Columns

OV-PLOT Q PLOT Columns are used for the analysis of natural gas, refinery gases, chemical weapon gas, CFCs, sulfurs, and amines.

Features: Porous Divinylbenzene polymer. Good separations of volatile sulfurs, CO₂, methane, oxygenate solvent vapors from light hydrocarbon C1 to C4 stream. Separates ethane, ethylene, and acetylene.

Applications: Air, Carbon Monoxide, Methane, Carbon Dioxide, Hydrocarbon Gases, Oxygenates, Alcohols, N₂O, Refinery Gas I, Fatty Acids (Free), Natural Gas, Solvents, Gases (Air, Carbon Monoxide, Methane, Carbon Dioxide), Nitrogen, Oxygen, Argon, Sulfur Gas Analysis of Light Hydrocarbon Streams.

Similar Phases: AT-Q, CP-PoraPlot Q, GS-Q, HP-PLOT Q, Rt-Q, Rt-Q-BOND, Rtx-QS, Supel-Q-PLOT



OV Part: Q30-5330
Column: OV-PLOT Q, 30m x 0.53mm x 30um
Oven: 60C (2min) 30C/min to 240C (1min)
Detector: TCD
Sample: 500ppm H₂S spike in natural gas standard

Part #	Description
Q10-5330	10 Meter x 0.53 mm ID x 30 um OV-PLOT Q PLOT Column
Q15-2580	15 Meter x 0.25 mm ID x 8 um OV-PLOT Q PLOT Column
Q15-3215	15 Meter x 0.32 mm ID x 15 um OV-PLOT Q PLOT Column
Q15-5330	15 Meter x 0.53 mm ID x 30 um OV-PLOT Q PLOT Column
Q25-5330	25 Meter x 0.53 mm ID x 30 um OV-PLOT Q PLOT Column
Q30-2580	30 Meter x 0.25 mm ID x 8 um OV-PLOT Q PLOT Column
Q30-3215	30 Meter x 0.32 mm ID x 15 um OV-PLOT Q PLOT Column
Q30-5330	30 Meter x 0.53 mm ID x 30 um OV-PLOT Q PLOT Column
Q50-3250	50 Meter x 0.32 mm ID x 5 um OV-PLOT Q PLOT Column
Q50-5310	50 Meter x 0.53 mm ID x 10 um OV-PLOT Q PLOT Column
Q50-5330	50 Meter x 0.53 mm ID x 30 um OV-PLOT Q PLOT Column

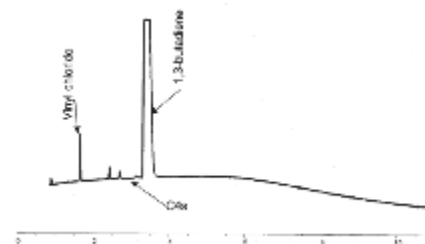
OV-PLOT U PLOT Columns

OV-PLOT U PLOT Columns are used for the analysis of natural gas, refinery gases, chemical weapon gas, CFCs, sulfurs, and amines.

Features: Porous Divinylbenzene, ethylene glycol dimethacrylate co-polymer. Good separations of volatile sulfurs, amines, acids, CO₂, oxygenate solvent vapors from light hydrocarbon C1 to C4 stream.

Applications: Amines in Water, Primary Amines, CO₂ in Air, Moisture, Hydrocarbon Gases, Solvents, N₂/CO, Sulfurs

Similar Phases: CP-PoraPLOT U, CP-PoraBOND U, HP-PLOT U, Rt-U-BOND



OV Part: U30-5320
Column: OV-PLOT U, 30m x 0.53mm x 20um
Oven: 100C (5min) 10C/min to 150C (1min)

Part #	Description
U15-3210	15 Meter x 0.32 mm ID x 10 um OV-PLOT U PLOT Column
U15-5320	15 Meter x 0.53 mm ID x 20 um OV-PLOT U PLOT Column
U30-2505	30 Meter x 0.25 mm ID x 5 um OV-PLOT U PLOT Column
U30-3210	30 Meter x 0.32 mm ID x 10 um OV-PLOT U PLOT Column
U30-5320	30 Meter x 0.53 mm ID x 20 um OV-PLOT U PLOT Column

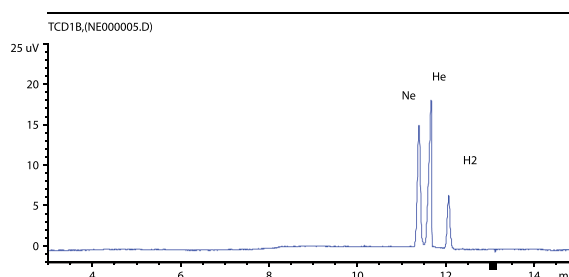
OV-Molesieve 5A PLOT Columns

OV-Molesieve 5A PLOT Columns are used for the analysis of permanent gases.

Features: Separates permanent gases, such as argon, oxygen, nitrogen, carbon monoxide, and methane.

Applications: Separates O₂, N₂, CO and CH₄ quickly. Use thicker films (25um or 50um) for Argon/Oxygen separations. Use thinner films for routine air monitoring applications.

Similar Phases: CP-Molesieve 5A, HP-PLOT Molesieve, Mole Sieve 5A PLOT, Rt-Msieve 5A



OV Part: M50-5350
 Column: OV-Molesieve 5A, 2 x 50m x 0.53mm x 50um
 Carrier Gas: Nitrogen

Part #	Description
M05-3212	5 Meter x 0.32 mm ID x 12 um OV-Molesieve 5A PLOT Column
M05-5325	5 Meter x 0.53 mm ID x 25 um OV-Molesieve 5A PLOT Column
M15-3212	15 Meter x 0.32 mm ID x 12 um OV-Molesieve 5A PLOT Column
M15-3225	15 Meter x 0.32 mm ID x 25 um OV-Molesieve 5A PLOT Column
M15-5325	15 Meter x 0.53 mm ID x 25 um OV-Molesieve 5A PLOT Column
M15-5350	15 Meter x 0.53 mm ID x 50 um OV-Molesieve 5A PLOT Column
M30-3212	30 Meter x 0.32 mm ID x 12 um OV-Molesieve 5A PLOT Column
M30-3225	30 Meter x 0.32 mm ID x 25 um OV-Molesieve 5A PLOT Column
M30-5325	30 Meter x 0.53 mm ID x 25 um OV-Molesieve 5A PLOT Column
M30-5350	30 Meter x 0.53 mm ID x 50 um OV-Molesieve 5A PLOT Column
M50-5350	50 Meter x 0.53 mm ID x 50 um OV-Molesieve 5A PLOT Column

OV-Alumina KCl PLOT Columns

OV-Alumina KCl PLOT Columns are ideal for light hydrocarbons.

Features: Immobilized, rinseable with water or methanol, good separation of olefins C₂ to C₅, least activity for propadiene, significant moisture effect on acetylene/propadiene retention time shifting. Ideal for light hydrocarbons C₁ to C₅ separations, CFCs

Applications: C₁-C₅ Alkanes, Alkenes, Alkynes, Furans, Heptafluoropropanes, Refinery Gases

Similar Phases: AB-PLOT Al₂O₃ KCl, Al₂O₃/KCl, Alumina chloride PLOT, AT-Alumina, CP-Al₂O₃/KCL-PLOT, HP-PLOT/Al₂O₃ "KCL", Rt-Alumina PLOT

Part #	Description
K15-3280	15 Meter x 0.32 mm ID x 8 um OV-Alumina, Non-Polar Deactivation PLOT Column
K15-5315	15 Meter x 0.53 mm ID x 15 um OV-Alumina, Non-Polar Deactivation PLOT Column
K25-3280	25 Meter x 0.32 mm ID x 8 um OV-Alumina, Non-Polar Deactivation PLOT Column
K30-3280	30 Meter x 0.32 mm ID x 8 um OV-Alumina, Non-Polar Deactivation PLOT Column
K30-5315	30 Meter x 0.53 mm ID x 15 um OV-Alumina, Non-Polar Deactivation PLOT Column
K50-3280	50 Meter x 0.32 mm ID x 8 um OV-Alumina, Non-Polar Deactivation PLOT Column
K50-5315	50 Meter x 0.53 mm ID x 15 um OV-Alumina, Non-Polar Deactivation PLOT Column
K60-3280	60 Meter x 0.32 mm ID x 8 um OV-Alumina, Non-Polar Deactivation PLOT Column
K60-5315	60 Meter x 0.53 mm ID x 15 um OV-Alumina, Non-Polar Deactivation PLOT Column

OV-Alumina Na₂SO₄ PLOT Columns

OV-Alumina Na₂SO₄ PLOT Columns are excellent for light hydrocarbon analysis.

Features: Deactivated with sodium sulfate. Immobilized, rinseable with water or methanol. Excellent separations of olefins C₂ to C₅, slight absorption of propadiene. Low moisture effect on acetylene/propadiene retention time shifting. Ideal column for complete separations of C₁ to C₅ light hydrocarbons, CFCs. Middle range of "polarity" for Alumina phases. Resolves acetylene from butane and propylene from isobutene.

Applications: Butadienes, CFCs, C₁-C₅, Extended C₁ to C₁₀, Ethylene, LPG, MAPP, Natural Gas, Nitrogen Oxides, Propane, Propylene, Refinery Gas.

Similar Phases: Al₂O₃/Na₂SO₄, Alumina PLOT, Alumina sulfate PLOT, AT-Alumina, CP-Al₂O₃/Na₂SO₄-PLOT, HP-PLOT/Al₂O₃ "S", Rt-Alumina PLOT, Rt-Alumina BOND/Na₂SO₄

Part #	Description
N15-3280	15 Meter x 0.32 mm ID x 8 um OV-Alumina, Polar Deactivation PLOT Column
N15-5315	15 Meter x 0.53 mm ID x 15 um OV-Alumina, Polar Deactivation PLOT Column
N25-3280	25 Meter x 0.32 mm ID x 8 um OV-Alumina, Polar Deactivation PLOT Column
N30-3280	30 Meter x 0.32 mm ID x 8 um OV-Alumina, Polar Deactivation PLOT Column
N30-5315	30 Meter x 0.53 mm ID x 15 um OV-Alumina, Polar Deactivation PLOT Column
N50-3280	50 Meter x 0.32 mm ID x 8 um OV-Alumina, Polar Deactivation PLOT Column
N50-5315	50 Meter x 0.53 mm ID x 15 um OV-Alumina, Polar Deactivation PLOT Column
N60-3280	60 Meter x 0.32 mm ID x 8 um OV-Alumina, Polar Deactivation PLOT Column
N60-5315	60 Meter x 0.53 mm ID x 15 um OV-Alumina, Polar Deactivation PLOT Column

OV-Alumina "M" PLOT Columns

OV-Alumina "M" (Na₂MoO₄) PLOT Columns are the most polar aluminum oxide phase and are modified by Na₂MoO₄ salt.

Features: Immobilized, rinseable with water or methanol. Good separations of olefins C₂ to C₅, less absorption of propadiene. Moderate moisture effect on acetylene/propadiene retention time shifting. Ideal column for complete separations of C₁ to C₅ light hydrocarbons, CFCs. Highest range of "polarity" for Alumina phases. Resolves acetylene from butane and propylene from isobutene.

Applications: CFCs, Light Hydrocarbons.

Similar Phases: AB-PLOT Al₂O₃ M, AT-Alumina, BGB-PLOT Al₂O₃ M, HP-PLOT/Al₂O₃ "M", GS-Alumina

Part #	Description
NA15-3280	15 Meter x 0.32 mm ID x 8 um OV-Alumina "M", Polar Deactivation PLOT Column
NA15-5315	15 Meter x 0.53 mm ID x 15 um OV-Alumina "M", Polar Deactivation PLOT Column
NA30-3280	30 Meter x 0.32 mm ID x 8 um OV-Alumina "M", Polar Deactivation PLOT Column
NA30-5315	30 Meter x 0.53 mm ID x 15 um OV-Alumina "M", Polar Deactivation PLOT Column
NA50-3280	50 Meter x 0.32 mm ID x 8 um OV-Alumina "M", Polar Deactivation PLOT Column
NA50-5315	50 Meter x 0.53 mm ID x 15 um OV-Alumina "M", Polar Deactivation PLOT Column
NA60-5315	60 Meter x 0.53 mm ID x 15 um OV-Alumina "M", Polar Deactivation PLOT Column

OV-PLOT GasPro PLOT Columns

OV PLOT GasPro PLOT Columns are used for the analysis of sulfur analysis, CFCs, light hydrocarbons, and solvents.

Features: Proprietary porous silica layer. Immobilized, rinseable with methanol, acetone, and pentane. High plate numbers. Good separations of volatile sulfurs, CO₂, solvents, and light hydrocarbons C1 to C5. Separates CO and Co₂ on a single column.

Applications: C1 and C2 Halocarbons (Freon), Halothane, Residue Solvents, Extended Hydrocarbon Analysis, Inorganic Gases, Sulfur Compounds in Propylene (1 ppm), Halocarbons, Mercaptans, Sulfur Gas Analysis in Light Hydrocarbon Streams, Method ASTM D 2505, Method ASTM D 5303

Similar Phases: CP-Silica PLOT, GS-GasPro

Part #	Description
GP05-3250	5 Meter x 0.32 mm ID x 5 um OV-PLOT GasPro PLOT Column
GP15-3250	15 Meter x 0.32 mm ID x 5 um OV-PLOT GasPro PLOT Column
GP30-3250	30 Meter x 0.32 mm ID x 5 um OV-PLOT GasPro PLOT Column
GP60-3250	60 Meter x 0.32 mm ID x 5 um OV-PLOT GasPro PLOT Column

Inlet Seals for Agilent 7890/6890/6850 GC Systems

OV Part Number	Description	Unit
4300	0.8mm Inlet Seal, Gold-plated For Agilent Systems, Splitless, with Gold-plated Washers	2/pk
4300-10	0.8mm Inlet Seal, Gold-plated For Agilent Systems, Splitless, with Gold-plated Washers	10/pk
4350	0.8mm Inlet Seal, Stainless Steel For Agilent Systems, Splitless, with SS Washers	2/pk
4350-10	0.8mm Inlet Seal, Stainless Steel For Agilent Systems, Splitless, with SS Washers	10/pk
4400	0.8mm Inlet Seal, Gold-plated For Agilent Systems, Split Double Groove (Cross), with Gold-plated Washers	2/pk
4400-10	0.8mm Inlet Seal, Gold-plated For Agilent Systems, Split Double Groove (Cross), with Gold-plated Washers	10/pk
4450	0.8mm Inlet Seal, Stainless Steel For Agilent Systems, Split Double Groove (Cross), with SS Washers	2/pk
4450-10	0.8mm Inlet Seal, Stainless Steel For Agilent Systems, Split Double Groove (Cross), with SS Washers	10/pk
4800	Replacement Gold-plated Washers for Inlet Seal	12/pk
4850	Replacement Stainless Steel Washers for Inlet Seal	12/pk



Address: 115 Industry Road
Marietta, Ohio 45750

Toll-free Phone: 1-800-729-6872

Phone: 1-740-373-2276

Fax: 1-740-373-9910

<https://ovsc.com/>



Rev: 3/2019